



# SHANTI DEVI

## The elderly lady

You are an elderly woman. You farmed with your husband before he died. Now your land on the edge of the town is tilled by a tenant farmer.

However, farm yields are decreasing and the tenant is not paying the rent as agreed.

He's a powerful ward member and probably trying to sell your land.

Your children live far away in the mega-city; they are domestic workers and send you money, but it's not regular. You are getting very old and now and walk with a cane. Your neighbours try to help you with household work, but the support doesn't cover all your needs.

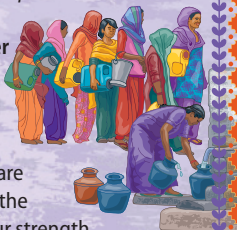


# GAME PLAY INSTRUCTIONS

*Please elaborate your answers as you get into character! Share your character's thoughts and feelings with the group.*

## Round One

**A Disaster Management Officer from the City Government comes knocking. She asks:**



**Why didn't you come to the neighbourhood meeting about the floods?** You explain that you are tired and can't walk so much, the meeting was in the evening when you are resting and conserving your strength.

**How have the floods affected you and what would improve your situation?** It is very difficult because the floods affect your rental income: the rentee is not gaining a good crop from the land is not paying the rent as he should. Also, your income from your family's remittances is not completely reliable so you wish this local income was more reliable. You have few options as you are too old to continue physical work at your age.

## Round Two

**This time, you manage to attend the neighbourhood meeting.**

The disaster risk reduction volunteer network idea interests you. There is also an official government safety net scheme that will provide you with some security via food vouchers, etc. It sounds interesting to you ... but still you are also concerned about whether, in times of water logging (short-term disaster), you will get the required assistance for your health and safety in time.

*Discuss with the group.*

